

# IT'S EASY BEING GREEN

with **ARBORTECH** forestry bodies  
and arboriculture products!



**Toolboxes provide organized storage**

**Adjustable shelving**



**New T-Handle 3-point latch is pad-lockable**

(owner supplied padlock shown)

**Cut your problems down to size** — from quick clean-up to complete land-clearing. Dispose of unwanted trees and organic waste with ease! According to experts — arborists, horticulturists, botanists, agronomists, and professional landscapers — ARBORTECH has been one of the nation's leading manufacturers in the industry since 1982. ARBORTECH is the first and only forestry body manufacturer to produce its own conversion hoist and was the first company in the industry to

use galvanized steel to increase the longevity and corrosion resistance of the equipment you rely on.

Through innovation and experience, we have been able to develop versatile products and cater to the needs of entire corporate fleets, as well as, independent operators. ARBORTECH prides itself on giving the same personalized attention to each and every one of its customers.

**We offer:**

- **Fast service and lower shipping costs from facilities in Ohio, Oklahoma, and California**
- **A variety of body sizes, styles, and options to meet your needs**
- **The finest, most durable Chip Bodies and Utility Tree Vehicles in the industry**
- **All ArborTech-installed equipment inspected and function-tested**
- **Outstanding 3-year "No Rust, No Bust" Warranty**



## ARBORTECH

www.arbortech.cc • info@arbortech.cc  
3203 West Old Lincoln Way • Wooster, Ohio 44691  
1-800-255-5715 • Fax (330) 264-0891

**#1 Seller**



## ARBORTECH Chip Body

### STANDARD FEATURES

- All Arbotech-installed equipment inspected and function tested
- Body cleaned with a high-temperature, high-pressure chemical solution, primed with a high-grade automotive primer, and finish-painted in white, tan, or black
- Coal tar epoxy treatment on interior of box
- Completed vehicle complies with all Federal Motor Vehicle Safety Standards
- Ladder Compartment with Primer Shelf and rear door
- Undercoating on underside of floor, toolboxes, and wheelwells
- Three-year "No Rust, No Bust" warranty

### OPTIONAL EQUIPMENT

- Aerial Boom Crotch
- Backup Alarm
- Barn Door Tailgate
- Belly Box (pictured here)
- Cab Guard for Aerial Units
- Compartment Lights
- Connectors
- Cutout in lower front corner of body for Thru-Compartment
- Electric Brake Controller
- 2" or 2-5/16" ball or pin-type hitch
- Ladder Racks
- LED Light Kit
- Personnel Cabs
- Strobe Light with Brush Guard
- Sign Carriers
- Side-louvered Vents for Air Exhaust
- Wheel Chocks



**"Stumped" for an economical solution? Arbotech's Utility Tree Vehicle transforms to meet your needs – get three trucks in one!**



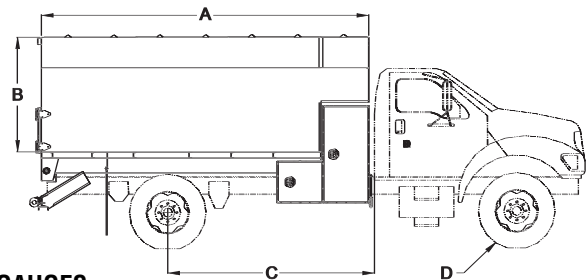
Remove the sectional roof and the UTV converts to a dump truck.

Go further and remove the UTV's sides to create a platform spray truck.

	Standard Equipment	Optional Equipment
Tailgate	24"/30" swing to side	24"/30" B.D. or Drop Down
Lighting	Trucklite Incandescent	Trucklite L.E.D. (less back up)
Trailer Plug	(6) Prong Round	(7) Pole Round & Flat (4) Pole Round
Hitches	T-60 Pintle	K300 Combo/T-90/T-100

### OVERALL DIMENSIONS

	9'	10'	11'	12'	14'	16'
A Body Length	9'	10'	11'	12'	14'	16'
B Inside Height	56"/60"	56"/60"	56"/60"	56"/60"	60"/72"	78"
C Min. C.A. Requirement	60"	84"	84"	84"	102"	138"
D Min GVRW	11,000	15,000	15,000	19,000	25,500	31,000



### MATERIAL GAUGES

- |                     |                    |  |
|---------------------|--------------------|--|
| • Floor Plate       | 10 gauge galvaneal | Flat sides with vertical reinforcements        |
| • Side Panel        | 12 gauge galvaneal | 5" formed radius at top                        |
| • Side Panel Radius |                    | Flat panel with formed seams                   |
| • Front Panel       | 12 gauge galvaneal | Latitudinal ribs with formed rooftop rib vents |
| • Top Panel         | 14 gauge galvaneal | Doubled paneled                                |
| • Tailgate          | 16 gauge galvaneal |  |

Since product improvement is a constant goal at Arbotech, these specifications/options are subject to change without notice.

# ARBORTECH

**Call for a Custom Quote!**

3203 West Old Lincoln Way • Wooster, Ohio 44691  
1-800-255-5715 • Fax (330) 264-0891  
www.arbotech.cc

3 Locations To Serve You Better!

**3-YEAR WARRANTY**

**No Rust, No Bust.**



**Ohio  
Oklahoma  
California**